

Wireless Mouse

Instructions

Model VM08A 190336

Important: Read before use. • Importante: Leer antes de usar.

REGULATORY STATEMENTS

FCC (Class B) | FCC ID: 2BHHU-190336MS (Mouse)

CE/UKCA

- ENGLISH :** The frequency band used for this product is 2402 – 2480 MHz. The maximum emitted transmission power is 5.89 mW E.I.R.P. This device complies with the requirements of CE RED 2014/53/EU (UKCA Radio Equipment Regulations 2017). The Declaration of Conformity for is available at: support.manhattanproducts.com/barcode/190336
- DEUTSCH :** Das verwendete Frequenzband dieses Produkts ist 2402 – 2480 MHz. Die maximale abgestrahlte Sendeleistung beträgt 0,0123 mW E.I.R.P. Dieses Gerät entspricht der CE RED 2014/53/EU. Die Konformitätserklärung für dieses Produkt finden Sie unter: support.manhattanproducts.com/barcode/190336
- ESPAÑOL :** Este dispositivo cumple con los requerimientos de CE RED 2014/53/EU. La declaración de conformidad está disponible en: support.manhattanproducts.com/barcode/190336
- FRANÇAIS :** Cet appareil satisfait aux exigences de CE RED 2014/53/EU. La Déclaration de Conformité est disponible à : support.manhattanproducts.com/barcode/190336
- POLSKI :** Urządzenie spełnia wymagania CE RED 2014/53/EU. Deklaracja zgodności dostępna jest na stronie internetowej producenta: support.manhattanproducts.com/barcode/190336
- ITALIANO :** Questo dispositivo è conforme alla CE RED 2014/53/EU. La dichiarazione di conformità è disponibile al: support.manhattanproducts.com/barcode/190336



Warning:

This device complies with Part 15 of the FCC Rules. Operation is subject to the following two conditions: (1) this device may not cause harmful interference, and (2) this device must accept any interference received, including interference that may cause undesired operation.

Changes or modifications not expressly approved by the party responsible for compliance could void the user's authority to operate the equipment.

NOTE: This equipment has been tested and found to comply with the limits for a Class B digital device, pursuant to Part 15 of the FCC Rules. These limits are designed to provide reasonable protection against harmful interference in a residential installation. This equipment generates, uses and can radiate radio frequency energy and, if not installed and used in accordance with the instructions, may cause harmful interference to radio communications. However, there is no guarantee that interference will not occur in a particular installation.

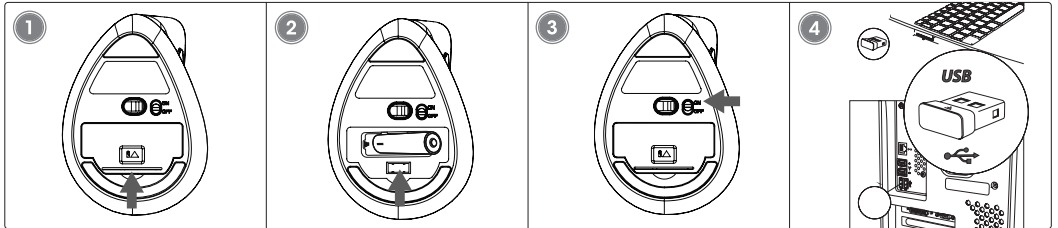
If this equipment does cause harmful interference to radio or television reception which can be determined by turning the equipment off and on, the user is encouraged to try to correct the interference by one or more of the following measures:

- Reorient or relocate the receiving antenna.
- Increase the separation between the equipment and receiver
- Connect the equipment into an outlet on a circuit different from that to which the receiver is connected.

-- Consult the dealer or an experienced radio/TV technician for help

NOTE: This device and its antenna(s) must not be co-located or operation in conjunction with any other antenna or transmitter

The device has been evaluated to meet general RF exposure requirement.



ENGLISH

- 1 Open battery cover
- 2 Remove USB receiver
- 3 Insert battery.
- 4 Close battery cover. Turn on the mouse
- 5 Insert USB receiver into available port on computer. The computer operating system will automatically detect the device and install the proper driver(s).

NOTE: If the computer doesn't detect the mouse, check the USB connection and the USB compatibility of your operating system (Windows XP/Vista/7/10/11, macOS, Linux, and Chrome OS).

For specifications, go to manhattanproducts.com.



North & South America
IC Intracom Americas
550 Commerce Blvd.
Oldsmar, FL 34677, USA

Asia & Africa
IC Intracom Asia
4-F, No. 77, Sec. 1, Xintai 5th Bld.
Xizhi Dist., New Taipei City 221, Taiwan

Europe
IC Intracom Europe
Löhbachter Str. 7
D-58553 Halver, Germany

All trademarks and trade names are the property of their respective owners. © IC Intracom. All rights reserved. Manhattan is a trademark of IC Intracom, registered in the U.S. and other countries.



Printed on recycled paper.

For additional benefits:

Scan to
register your
product warranty



or go to: register.manhattanproducts.com/r/190336



Adobe